



**Cordless Floor  
Polisher  
Model CFP500**



**Care and Use Instructions**

Ashcombe Court, Woolsack Way, Godalming, Surrey,  
GU7 1LQ, UK

Tel: +44 (0)1483 663 050, Email: [enquiries@ewbank.co.uk](mailto:enquiries@ewbank.co.uk)

**[www.ewbank.co.uk](http://www.ewbank.co.uk)**



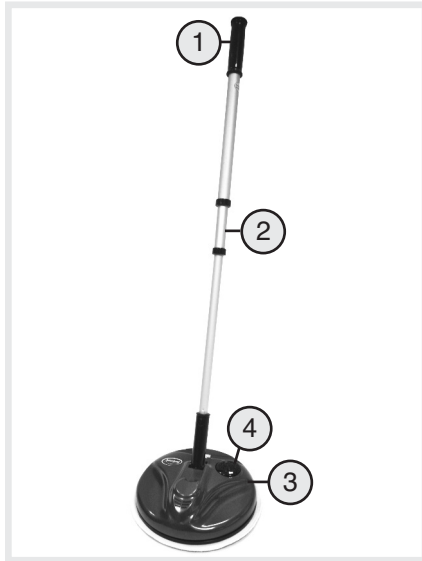
Thank you for purchasing your Ewbank Cordless Floor Polisher, we hope you enjoy using it.

Please read the manual carefully to get the most out of your product.

**Pack Contents:**

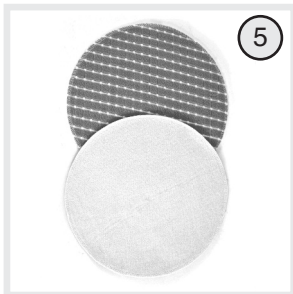
**Part No.**

- |                                  |        |
|----------------------------------|--------|
| 1 - Handle                       |        |
| 2 - Extension Tube               |        |
| 3 - Cordless Floor Polisher Unit |        |
| 4 - On/Off Switch                |        |
| 5 - Reversible Cleaning Pads x 2 | EB0487 |
| 6 - Battery Charger              | EB0485 |
| Input: 100-240VAC, 50-60Hz       |        |
| Output: 7.2VDC MAX, 200mA        |        |
| 7 - Rechargeable Battery         | EB0486 |
| Model: NiMH UM-3x5               |        |
| Voltage: 6VDC                    |        |



**Read the instruction book before using the Ewbank Cordless Floor Polisher and make sure that...**

- The cable is in perfect condition.
- All packaging materials are removed from the product.



## Safety Instructions - CAUTION

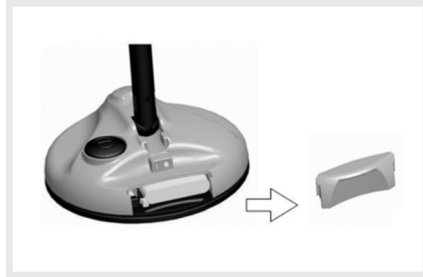


- Do not expose the product, battery or charger to extreme temperatures or moisture.
- Store in a cool dry place.
- Only operate the sweeper with the enclosed rechargeable battery and charger.
- Do not attempt to remove the rechargeable battery from the polisher when charging.
- Disconnect battery charger once the battery is completely charged.
- Never throw the rechargeable battery into open flames or burn it.
- Ensure the polisher is switched off at the on/off push - button switch when removing the cleaning pads.
- Do not clean the polisher during the charging process.
- This appliance can be used by children aged from 8 years and above and persons with reduced physical, sensory or mental capabilities or lack of experience and knowledge if they have been given supervision or instruction concerning use of the appliance in a safe way and understand the hazards involved. Children shall not play with the appliance. Cleaning and user maintenance shall not be made by children without supervision.
- Ensure fingers, hair, jewellery, etc. are kept away from the rotating parts.
- To protect the unit from overheating do not block rotation of the head.
- Do not use on burning or smoking objects such as cigarettes, matches or hot ash.
- Do not operate the appliance without the polishing pad in place.

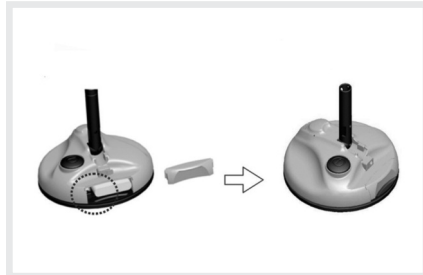
## Assembly

Protect all surfaces with a cover before commencing assembly.

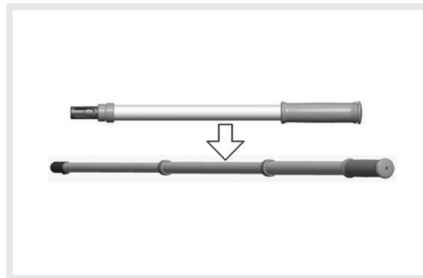
1. Open the battery compartment by sliding the cover in an upwards direction.



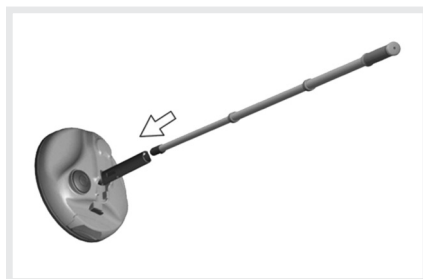
2. Insert the battery connector into the socket adjacent to the battery pack with the main unit and replace the battery compartment cover.



3. Twist the extension pole at the joints to extend to your required length.



4. Insert the extension pole into the bail securely.



## Charging the battery

**Please ensure the battery pack is connected to the unit before charging.**

The battery must be fully charged before the Cordless Floor Polisher is used for the very first time. The first charge may take 7-8 hours, with subsequent regular charging taking approx. 4 hours. The charging indicator located on the charger plug glows red whilst charging is in progress and will turn green once the battery is fully charged.

## Using your Cordless Floor Polisher



### **CAUTION - DO NOT USE THIS PRODUCT ON CARPET**

- Attach the polishing pad onto the grips located on the bottom of the rotating head, ensuring the pad is central to the head.
- Push the ON/OFF button to begin rotating head motion.
- To stop the head from rotating press the on/off switch or put the handle into a vertical upright position.
- When cleaning / polishing keep the rotating head moving across the floor surface at a gentle speed.
- Only use dedicated floor cleaning products. The recommended cleaner is Ewbank Floor Polish & Reviver (Part No. FP535), available from Ewbank stockists or online at [www.ewbank.co.uk](http://www.ewbank.co.uk).
- Always follow the manufacturer's instructions for floor cleaning products.
- Use the textured front side of the pad to clean your floor.
- Use the reverse white side of the pad to buff and polish to a shine.
- When cleaning sensitive surfaces apply the polisher in the first instance to a small, less obvious area, i.e. the corner of a room.
- Ensure that no grit or sharp particles are stuck to the pad as these may cause damage to the floor surface.

## Cleaning and caring for your Cordless Floor Polisher

- Ensure charger unit is unplugged before cleaning the floor polisher unit.
- Clean the casing with a damp cloth and mild detergent.
- Dry the unit using a dry cloth.
- The cleaning pads are machine washable.
- If any dirt enters into the gap between the rotating head and the base of the unit, ensure the unit is switched off, clip off the rotating head first and remove the dirt.



## Battery replacement

Push Switch (4) off first and open the battery cover. Unplug battery lead gently from the socket and remove battery pack.


Please dispose of batteries responsibly at a recycling facility.

## Technical data

Operating time with full battery charge (depending on floor covering) - up to 40 minutes

Charging time with empty battery - typically 4 hours

Battery Voltage/ Capacity - 6V/1000mAH

Charger Model/Outlet - JY15-072-020-BS/ 7.2V  200mA

Voltage/Frequency (Charger) - 100-240V ~ 0.4A

Rated Consumption (Charger) - 200mAH

## Electrical Connection

This unit is a Class III battery-powered appliance which means it operates at SELV (Safety Extra Low Voltage).

This unit is supplied with an approved Class II plug-in mains battery charger.  
If the output lead is damaged **DO NOT USE** for charging your CFP500 polisher. Instead, replace only with a new plug-in charger, Ewbank Part No. EB0485.

### EC Declaration of Conformity

We declare that the charger unit JY15-072-020-BS conforms to:  
EN55014-1: 2006+A1:2009,  
EN55014-2: 1997+A1:2001+A2:2008+AC:1997.



Tim Hopper Technical Director

## INFORMATION ON THE DISPOSAL OF WASTE ELECTRICAL AND ELECTRONIC EQUIPMENT KNOWN AS WEEE

Your attention is brought to new directives applicable to the disposal of this electrical equipment, where in accordance with the legislation this product must not be disposed of in your normal household waste. Instead it is your responsibility to dispose of this type of waste by handing it over to special designated collection points for recovery and recycling. This product is marked with a 'Wheellie bin' symbol with a cross on it to remind you of this action. The objective of this directive is to help conserve resources and ensure that it is recycled in a manner that protects human health and the environment. For more information about where you can drop off your waste please contact your local authority, take back facilities are free of charge.



## Your Guarantee

This product is covered by a 12 month guarantee.  
This does not cover normal wear and tear or abuse.  
For guarantee purposes, please retain your original receipt as proof of purchase.  
This guarantee does not affect your statutory rights.

For spares, service and further information please contact;  
Customer Services, Ewbank Products Ltd, Ashcombe Court, Woolsack Way,  
Godalming, Surrey, GU7 1LQ, UK

Tel: +44 (0) 1483 663 050, Email: [enquiries@ewbank.co.uk](mailto:enquiries@ewbank.co.uk)  
Open from 08:30 - 17:00 Mon - Thur and 08:30 - 15:45 on Fri.

[www.ewbank.co.uk](http://www.ewbank.co.uk)

Made in China



Ashcombe Court, Woolsack Way, Godalming, Surrey,  
GU7 1LQ, UK

Tel: +44 (0)1483 663 050  
Email: [enquiries@ewbank.co.uk](mailto:enquiries@ewbank.co.uk)

**[www.ewbank.co.uk](http://www.ewbank.co.uk)**

2013 © Ewbank Products Ltd  
EB0476 03/2015