



Power Sweeper

Model 940



Care and Use Instructions

Customer Services, Ewbank Products Ltd, Billington Road, Burnley
Lancashire, BB11 5ED.

Tel: 01282 835 841

www.ewbank.co.uk

Rechargeable Power Sweeper

1. Use

This Power Sweeper is intended for the sweeping of dirt and for indoor use only.

The Power Sweeper is not intended for the sweeping of gravel-faced concrete, gravel and similar surfaces, not for deep-pile carpets and wet floor coverings or for commercial use. Use only as described in this manual.

Do not allow the appliance to be used as a toy. Do not let children use this device unsupervised. Do not pick up burning or smoking objects such as cigarettes, matches, or hot ashes.

2. Technical data

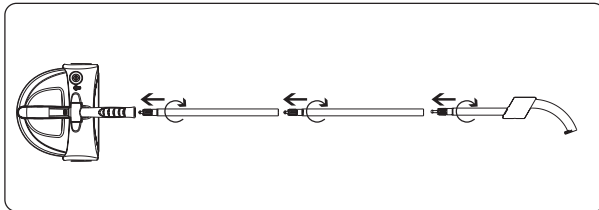
Voltage/frequency (charger).....230 V~50Hz
 Rated consumption (charger).....4 W
 Output (charger).....9 V d.c. 200 mA
 Operating time with full battery charge (depending on floor covering).....25-30 min
 Battery - working voltage.....4.8 V
 Charging time with empty battery.....12-16 hrs
 Sound pressure level.....75dB(A)

3. Prior to initial

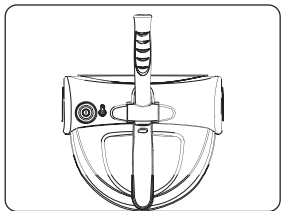
Before starting the device make sure that;

- The charger and its cable are in good condition.
- Remove all packaging materials from the product.

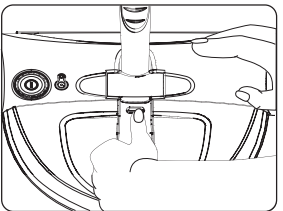
Assembly



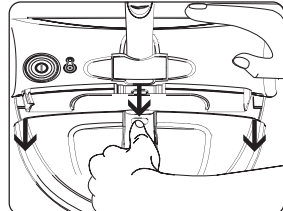
Battery charging / Operation



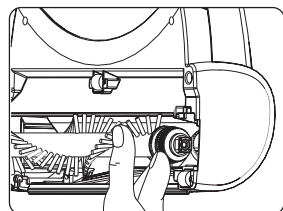
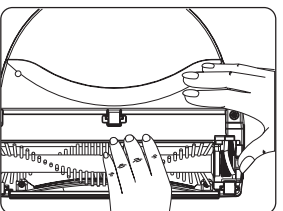
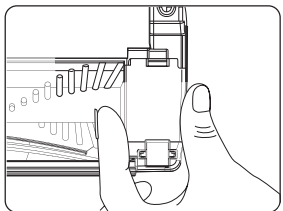
Removing the dirt container



Press and Pull the dirt container



Removing the brush roller



Rechargeable Power Sweeper

4. Assembling the Power Sweeper

- Assemble the handle by inserting the three sections into each other and turn to secure.
- Screw the handle into the device mounting.

5. Battery Charging

The Power Sweeper is supplied with an empty Ni-MH rechargeable battery. Make sure the battery is charged for 16 hours before initial use, this will give optimum battery performance. Charging processes thereafter takes 12-16 hours.

To charge the battery

- switch off the device with the switch, insert the plug of the charger in the charging jack of the device
- then insert the mains plug in a 230 V~50Hz socket.
The red charging lamp is illuminated during the charging process. If this is not the case, check the plug connections.

With fully charged battery the device provides an operating time of 25-30 minutes.

Caution:

- Only use the enclosed charger (9V d.c. 200 mA).
- Only operate the device with the enclosed rechargeable battery. It could otherwise get damaged.
- Do not attempt to remove the rechargeable battery for charging.
- Do not attempt to open the rechargeable battery jacket or dismantle the battery.

6. Working with the Power Sweeper

- Press the switch to start or stop the Power Sweeper.
- Guide the Power Sweeper over the floor.

Note: With some types of carpet the power sweeper could rattle or bounce. In this case work slowly and in the opposite direction.

Caution:

- Never use the device with the dirt container removed.
- Keep end of rotating brush, poles and other openings away from your face and body.

7. Cleaning & Emptying

To maintain the efficiency of the Power Sweeper, empty the dirt container after every use.

- Press the unlocking button of the dirt container to detach it from the device. With a slight upward movement, pull the dirt container horizontally from the device.
- Empty the dirt container and re-insert. (see page 1)

How to clean the brush

If the brush roller cannot be turned any longer because of dirt, threads or hair:

- Turn over the sweeper and hold it so that the flat side with the brush roller faces you.
- Remove the cover on the right hand side of the brush.
- Loosen the drive belt by pushing it to the right.
- Lift the brush roller on the right hand side and remove the guide attachment.
- Now pull the brush roller from the device to the right hand side.
- Remove the dirt (on both sides of the bristle) and clean the brush.

After cleaning, proceed as follows to re-install the brush roller.

- Ensure the drive belt is around the motor drive pulley.
- Insert the brush roller in the left hand slot
- Fit the guide attachment on the right hand side of the brush.
- Pull the belt around the guide attachment.
- Insert the brush in the right hand side and continue to pull the belt over the drive wheel.
- Fit the brush cover by first introducing the lower lugs in the recesses and press the cover in at the top.

Rechargeable Power Sweeper

8. Removing the Battery

- Release the dustpan from the unit.
- Unscrew the screw located on the battery panel.
- Pull the battery out from its housing.
- Unclip the two wires attached to the battery.

9. Disposal

This device contains a Ni-MH rechargeable battery which must be disposed properly. When the battery and the device are going to be disposed, take the battery out of the device and deposit at your local recycling point. Never deposit in your domestic waste bin.

Caution:

- Ensure that the device is not inadvertently switched on with the dirt container removed or while cleaning the brush.
- Do not clean the device during the charging process.
- Do not expose the Power Sweeper to extreme temperatures or moisture.
- Do not store it near ovens, heating elements, burners or in the bathroom.
- Never leave the device unattended while switched on.
- Never throw the rechargeable battery and the device into open flames or burn them!

INFORMATION ON THE DISPOSAL OF WASTE ELECTRICAL EQUIPMENT KNOWN AS WEEE

Your attention is brought to new directives applicable to the disposal of this electrical equipment, where in accordance with the legislation this product must not be disposed of in your normal household waste. Instead it is your responsibility to dispose of this type of waste by handing it over to special designated collection points for recovery and recycling. This product is marked with a 'Wheellie bin' symbol with a cross on it to remind you of this action. The objective of this directive is to help conserve resources and ensure that it is recycled in a manner that protects human health and the environment. For more information about where you can drop off your waste please contact your local authority, take back facilities are free of charge.



Your Guarantee

This product is covered by a 12 month guarantee.

This does not cover normal wear and tear or abuse.

For guarantee purposes, please retain your original receipt as proof of purchase.

For spares, service and further information please contact;

Customer Services, Ewbank Products Ltd, Billington Road, Burnley, Lancashire, BB11 5ED

Tel: 01282 835841

www.ewbank.co.uk

EB0018 02/09