



# Handheld Steam Cleaner Model HSC900



## Care and Use Guide

Customer Services, Ewbank Products Ltd, Billington Road, Burnley  
Lancashire, BB11 5ED.

Tel: 01282 835841

[www.ewbank.co.uk](http://www.ewbank.co.uk)



Thank you for purchasing the Ewbank® Handheld Steam Cleaner, we hope you enjoy using it.

Please read this manual carefully to get the most out of your Ewbank® product.

**Handheld Steam Cleaner**

**WARNING:** To reduce risk of fire, electrical shock or injury, the following safety precautions should always be followed when using an electrical appliance.

**WARNING:** To reduce the risk of electrical shock, this appliance uses a grounded (three-pronged) plug. This plug will fit in a grounded wall outlet only one way. If the plug does not correctly fit in the outlet, contact a licensed electrician to install a proper outlet. DO NOT attempt to modify the plug or defeat this safety feature.

**Safety Instructions - CAUTION**

- Do not direct steam at people, animals or at electrical devices
- Do not operate the steam function without water in the tank
- Do not allow the machine to run unattended at any time
- Close supervision is required when this machine is used near children.
- This product is not a toy.
- This machine is designed for household use only. Do not expose to rain.
- Do not overfill the steam cleaner water tank. The tank contains a maximum of 180ml of water only.
- Never turn the machine over when it is switched on or if it is still producing steam.
- Use extra care when using near stairs or step-ladders.
- Keep all parts of the body away from the jet of steam.
- Do not operate the steam functions in bare feet or whilst wearing open-toed footwear.
- To provide continued protection against the risk of electric shock, connect to grounded outlets only. It is recommended that a RCD (residual current device) rated at 30mA is fitted into the mains supply socket for added protection from electric shock.
- Do not immerse the cord, plug or machine in water or any other liquid.
- Do not operate with a damaged mains lead.
- Do not try to move, pull or carry the machine by the mains lead.
- Do not close doors on mains lead, or pull mains lead around sharp corners.
- Keep the mains lead away from hot or heated surfaces.
- Unplug the machine when not in use. Turn off all controls before unplugging from electrical outlet.
- Do not unplug by pulling on the mains lead. Never handle the plug or machine with wet hands.
- Store machine in a dry place. Do not expose to freezing temperatures.
- This appliance is not intended for use by persons (including children) with reduced physical, sensory or mental capabilities, or lack of experience and knowledge, unless they have been given supervision or instruction concerning use of the appliance by a person responsible for their safety.
- The boiler becomes hot when used. Move only by using the carrying handle.
- Do not stand on the machine.
- The equipment must be unplugged after use and before cleaning.

**Warning – Risk of Injury**

**Caution** – Steam is hot! 100 degrees celsius – Do not direct at people or animals

**Cleaning fabrics**

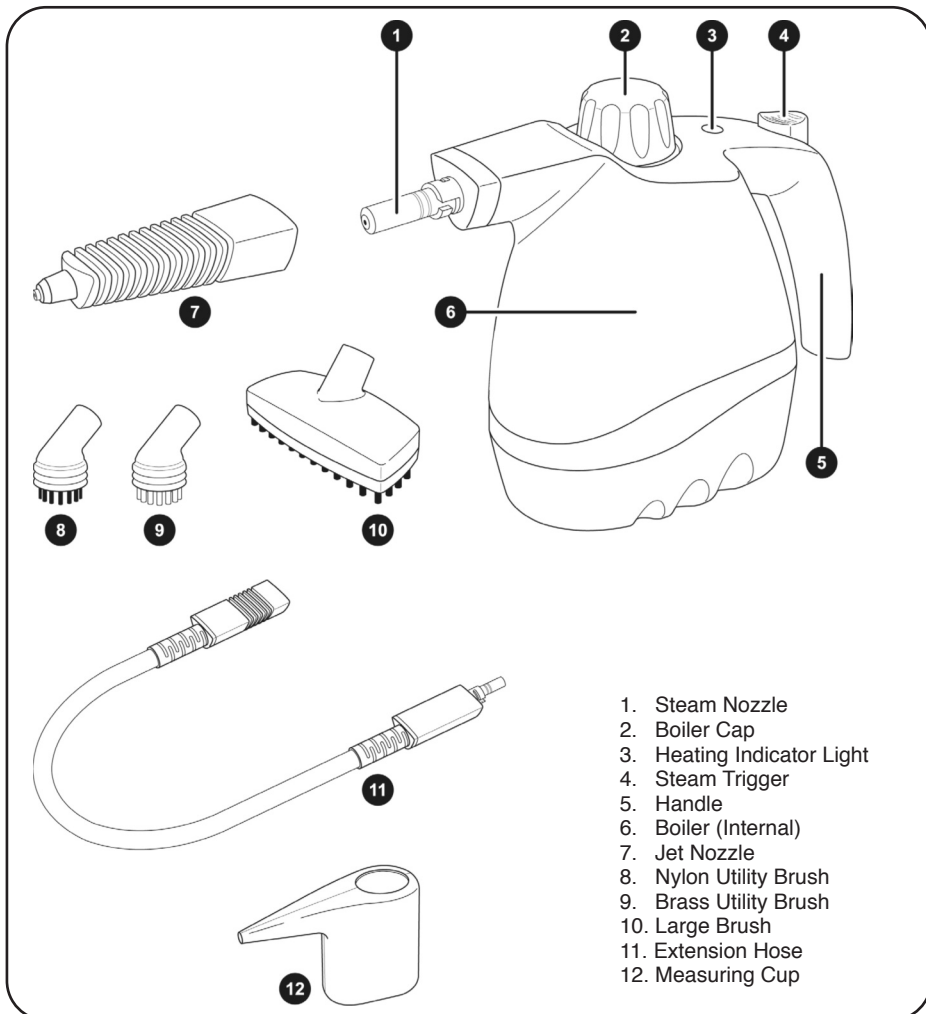
A number of materials and fabrics are NOT suitable for cleaning by steam. For example, do not use on leather, wax polished furniture or floors, synthetic fabrics, velvet, dralon or other delicate steam-sensitive materials.

## Handheld Steam Cleaner

### Product features and accessories

The following accessories are included with your Ewbank® Handheld Steam Cleaner. Please familiarise yourself with the product and accessories by reading this guide before use. Before using the product, please ensure that...

- The power cable is in good condition
- ALL packaging material has been removed from the product, and all accessories have been removed from the packaging and are accounted for



## Handheld Steam Cleaner

### Product features and accessories

1. The Steam Nozzle (1) emits a flow of hot, penetrating steam whenever the Steam Trigger (4) is pressed and held. The Jet Nozzle (7) or Extension Hose (11) should always be connected to the Steam Nozzle when the unit is in use.
  2. The Boiler Cap (2) is designed to safely contain steam inside the Boiler (6). The Boiler Cap (2) must be unscrewed and removed in order to fill the Boiler with water.
  3. The Heating Indicator Light (3) illuminates when the power cord is plugged in and the Boiler has begun heating. The Heating Indicator Light will turn off when the Boiler is fully heated and the unit is ready to begin producing steam.
  4. The Steam Trigger (4) is pressed and held in order to start the flow of steam from the Steam Nozzle, then released when you wish to stop.
  5. The Handle (5) is engineered to stay cool while providing maximum grip and comfort.
  6. The Boiler (6) is the internal reservoir where water is held and heated into steam. For optimal steam production, the Boiler should be filled with no more than 180 ml (6 fl. oz.) of water.
  7. The Jet Nozzle (7) connects to the Steam Nozzle and is designed to focus the flow of steam for concentrated cleaning. The Nylon Utility Brush (8), Brass Utility Brush (9) and Large Brush (10) all connect to the Jet Nozzle. Alternatively, the Jet Nozzle may be connected to the end of the Extension Hose (11).
  8. The Nylon Utility Brush (8) connects to the Jet Nozzle and is designed for scrubbing tough stains. The Nylon Utility Brush is ideal for use on many surfaces around the home, including carpet, ceramic tile, grouting and more.
  9. The Brass Utility Brush (9) connects to the Jet Nozzle and is designed for scrubbing especially tough stains. The Brass Utility Brush is ideal for use on BBQ grills, oven racks, automobile engines, shop tools and other hard metal surfaces.
  10. The Large Brush (10) connects to the Jet Nozzle and is designed for scrubbing larger areas of tough stains. The Large Brush functions similarly to the Nylon Utility Brush but is designed to scrub larger surface areas more efficiently.
- NOTE:** Some delicate surfaces, such as painted wood or stainless steel, may be scratched or damaged by the bristles of the Brushes – especially the Brass Utility Brush. Use careful judgment when deciding what surface to clean with any of the Brushes. If you are unsure if a surface will be damaged, it is recommended that you test a small inconspicuous spot before proceeding.
11. The Extension Hose (11) connects to the Steam Nozzle and is designed to provide additional freedom to easily reach a variety of spaces. The Jet Nozzle should be connected to the male end of the Extension Hose in order to safely focus the flow of steam.
  12. The Measuring Cup (12) provides an easy and convenient way to consistently fill the Boiler with the optimum amount of water (180 ml / 6 fl. oz.).

## Handheld Steam Cleaner

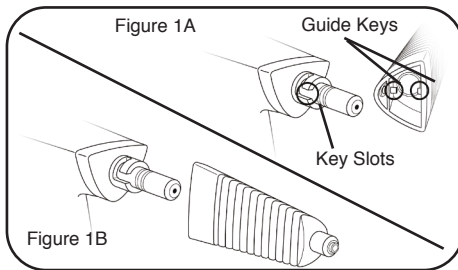
### Using your Ewbank® Handheld Steam Cleaner

#### CONNECTING JET NOZZLE

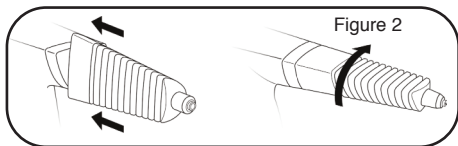


**WARNING: DO NOT** attempt to connect any accessories while unit is emitting steam. Doing so could result in burns or other injury.

1. Align Jet Nozzle with Steam Nozzle as shown (FIGURE 1-A). Jet Nozzle should be sideways 90° counter-clockwise from its final position. Guide keys on Jet Nozzle should line up with key slots on base of Steam Nozzle (FIGURE 1-B).



2. Slide Jet Nozzle onto Steam Nozzle - guide keys should fit into key slots. Push Jet Nozzle on as far as it will go. Rotate Jet Nozzle 90° clockwise, turning it until it will move no further (FIGURE 2).

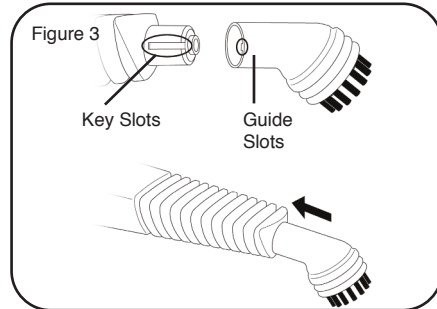


#### CONNECTING BRUSHES

**NOTE:** The Nylon Utility Brush, Brass Utility Brush and Large Brush are all attached in the same manner. The Nylon Utility Brush is illustrated in FIGURE 3 as an example.

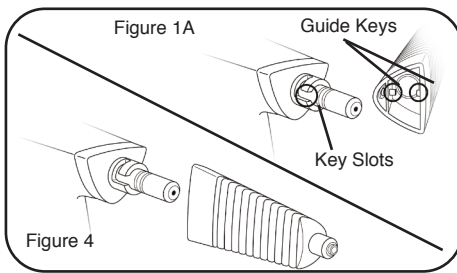
1. Align Brush with Jet Nozzle as shown. Guide key on back of Brush should line up with key slot on side of Jet Nozzle tip (FIGURE 3).
2. Firmly press Brush onto Jet Nozzle (FIGURE 3).

**CAUTION:** Make sure Brush is pushed as far as possible onto tip to ensure that it is seated securely. This will prevent steam leaks and ensure that the Brush is not forced off of the Jet Nozzle by steam pressure.

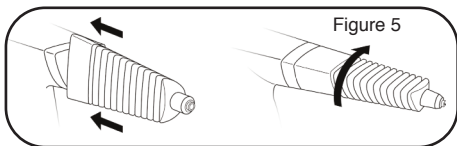


**Handheld Steam Cleaner****CONNECTING EXTENSION HOSE**

1. Align female end of Extension Hose with Steam Nozzle (FIGURE 4). Guide key on Extension Hose should line up with key slot on base of Steam Nozzle.
2. Slide Extension Hose onto Steam Nozzle, being sure to push it on as far as it will go. Rotate Extension Hose clockwise, turning it until you feel it "lock" into place and it will move no further (FIGURE 4).



3. Align Jet Nozzle with male end of Extension Hose (FIGURE 5). Guide key on Jet Nozzle should line up with key slot on base of Extension Hose nozzle.
4. Slide Jet Nozzle onto Extension Hose, being sure to push it on as far as it will go. Rotate Jet Nozzle clockwise, turning it until you feel it "lock" into place and it will move no further (FIGURE 5).

**FILLING BOILER**

1. Place Ewbank Handheld Steam Cleaner on a flat, level surface.
2. Make sure power cord is unplugged from electrical outlet.
3. Carefully remove Boiler Cap (2) by unscrewing it in an anti-clockwise direction and lift it off.



**CAUTION:** Refer to refilling procedure below for additional safety precautions that must be taken when refilling the unit after it has been in use.

4. Boiler should always be emptied after each use. If it was not emptied after the previous use, empty it now – this will make it easier to fill with the correct amount of water.
5. Fill Measuring Cup (12) with 180 ml (6 fl. oz.) of water.

**NOTE:** In order to extend the life of your Ewbank Handheld Steam Cleaner and keep it functioning at its maximum potential, it is highly recommended that distilled or de-mineralized water be used in the Boiler.

6. Carefully pour water from Measuring Cup into Boiler through fill hole.

**NOTE:** Do not exceed the Boiler's maximum capacity of 6 fl. oz. (180 ml.). This will ensure a better flow of steam with minimal dripping water.

7. Replace Boiler Cap, screwing it in a clockwise direction to tighten. Ensure it is screwed on securely to prevent hot water or steam escaping.

## Handheld Steam Cleaner

### REFILLING BOILER

If unit has been in use, always use the following safety precautions before removing the Boiler Cap to add water:

1. Allow unit to cool for 5-10 minutes.
2. Press and hold Steam Trigger to release all remaining steam. Steam can remain pressurized inside Boiler for up to an hour after use.

**WARNING:** Failure to follow these precautions may result in burns from escaping steam when the Boiler Cap is removed.

### STEAM CLEANING

**NOTE:** Before operating, make sure all desired accessories are connected and Boiler is filled with the correct amount of water (refer to Pages 6-9 for details).

1. For first-time use, remove protective plastic cover that is shipped on electrical plug. Plug power cord into a convenient 3-prong electrical outlet. Heating Indicator Light will illuminate to show that unit is receiving power and Boiler has begun to heat.

**CAUTION:** This unit uses a grounded (3-prong) electrical plug. Use only in properly installed electrical outlets. Do not attempt to alter plug or defeat this safety feature in any way.

2. After approximately 3 minutes, Heating Indicator Light will turn off. This indicates that Boiler is fully heated, and unit is ready to begin steaming.

**NOTE:** Heating Indicator Light may cycle off and on during use, accompanied by a slight temporary drop in steam pressure – this is a normal part of operation, as the Boiler works to maintain a steady optimal temperature.

3. Point Jet Nozzle (and any connected accessories) towards surface you wish to steam, and press Steam Trigger. Hold Trigger down for a continuous flow of steam.

**CAUTION:** Always be sure that Jet Nozzle and other accessories are pointed in a safe direction (away from yourself, other people, pets, and plants) before pressing Steam Trigger.

**NOTE:** When steaming any surface for the first time, it is recommended that you consult the manufacturer's guidelines for material being steamed. For items in question, test steam on an inconspicuous area before proceeding.

4. Using a slight back-and-forth motion over the area you are steaming will enhance the cleaning process, as will scrubbing the area (if a Brush is connected). Wipe steamed areas with a clean cloth to remove loosened dirt and grime.

**CAUTION:** Wiping an area while it is still wet is recommended, but use care when wiping surfaces such as metal that may still be hot.

5. To effectively kill bacteria and other microorganisms, hold Jet Nozzle (and any connected accessories) approximately 1/2 inch from surface and press Steam Trigger. Keep Trigger held and concentrate steam on the same spot for at least 5 seconds.
6. At its maximum capacity (180ml / 6 fl. oz.), the Boiler will provide approximately 8 minutes of continuous steam. If you wish to continue steaming, refer to Filling Boiler procedure on Page 7 – be sure to note Refilling Boiler section above.
7. Once you are finished using your Ewbank Handheld Steam Cleaner, immediately unplug power cord from electrical outlet. Refer to Storage & Care guidelines for on page 9 proper cleaning and storage procedures.



## *Handheld Steam Cleaner*

### **PROPER STORAGE**

Preparing your Ewbank Handheld Steam Cleaner for storage is quick and simple. When you have finished your steaming tasks, follow the steps listed below.

1. Unplug power cord from electrical outlet.
2. Allow unit to cool (30 minutes for complete cooling).
3. Press and hold Steam Trigger to release all remaining steam pressure.
4. Unscrew and remove Boiler Cap. Drain all remaining water from Boiler into a sink or tub, and then loosely replace Boiler Cap.

**NOTE:** Do not over tighten Boiler Cap when storing, as this may make it difficult to remove during next use.

5. Loosely bundle power cord, and store Ewbank Handheld Steam Cleaner in a cool dry location.

### **CARE & MAINTENANCE**

A common maintenance need for steam appliances is the removal of lime-scale build-up caused by high mineral content in many water supplies.

This build-up may limit the effectiveness and reduce the life of your Ewbank Handheld Steam Cleaner.

The best way to minimize mineral build-up is to use distilled or filtered water when using your Ewbank Handheld Steam Cleaner. If you are unable to use distilled water, it is recommended that the following procedure be followed monthly to help remove any mineral build-up:

1. Unplug power cord from electrical outlet.
2. Allow unit to cool (30 minutes for complete cooling).
3. Press and hold Steam Trigger to release all remaining steam pressure.
4. Unscrew Boiler Cap and drain all remaining water from Boiler into a sink.
5. Fill Measuring Cup with 180ml (6 fl. oz..) distilled vinegar. Carefully pour vinegar into Boiler.
6. Slowly shake or move unit around to agitate vinegar.
7. Allow to stand for at least 40 minutes.
8. Drain vinegar from Boiler.
9. Rinse Boiler with fresh water, drain and repeat until vinegar odour dissipates.
10. Loosely replace Boiler Cap and continue with normal storage procedure, as outlined in Proper Storage section above.

**Handheld Steam Cleaner**

<b>PROBLEM</b>	<b>POSSIBLE CAUSE</b>	<b>SOLUTION</b>
Unit fails to heat up. Heating Indicator Light DOES NOT illuminate.	Unit is not plugged in.	Plug power cord into electrical outlet.
	Household circuit breaker / ground fault circuit interrupter has tripped or blown a fuse.	Reset circuit breaker / ground fault circuit interrupter, or replace fuse. For assistance, contact a licensed electrician.
	Unit is damaged or otherwise in need of repair.	Immediately cease usage and unplug. Contact Consumer Service for assistance (see Page 12 for details).
Unit fails to heat up. Heating Indicator Light DOES illuminate. NOTE: Always allow sufficient time for unit to heat up before pressing Steam Trigger.	No water in Boiler.	Refer to Filling Boiler procedure on Page 7 to fill unit with water.
	Mineral build-up in unit.	Refer to Care & Maintenance section on Page 9 for details.
	Unit is damaged or otherwise in need of repair.	Immediately cease usage and unplug. Contact Consumer Service for assistance (see Page 12 for details).
Steam output is weak or intermittent.	Water level in Boiler is running low.	Refer to Filling Boiler procedure on Page 7 to refill unit with water.
	Mineral build-up in unit.	Refer to Care & Maintenance section on Page 9 for details.
Boiler Cap cannot be unscrewed.	Boiler Cap has been over tightened after previous use.	Boiler Cap should always be replaced loosely when storing. For assistance with a Cap that has become stuck, contact Consumer Service (see Page 12 for details).

*Handheld Steam Cleaner*

**Notes**

**Handheld Steam Cleaner****Technical Data**

Model	HSC900
Voltage	220-240VAC 50/60Hz
Wattage	900W
Current	3.9A
Water Capacity	180 ml (6 fl oz.)
Heating Time	3 min (approximate)
Continuous Steam Time	8 min (approximate)
Unit Weight	1.3kg
Unit Dimensions	338mm X 145mm X 211mm
Power Cord Length	3.8m

### INFORMATION ON THE DISPOSAL OF WASTE ELECTRICAL AND ELECTRONIC EQUIPMENT KNOWN AS WEEE

Your attention is brought to new directives applicable to the disposal of this electrical equipment, where in accordance with the legislation this product must not be disposed of in your normal household waste. Instead it is your responsibility to dispose of this type of waste by handing it over to special designated collection points for recovery and recycling. This product is marked with a 'Wheellie bin' symbol with a cross on it to remind you of this action. The objective of this directive is to help conserve resources and ensure that it is recycled in a manner that protects human health and the environment. For more information about where you can drop off your waste please contact your local authority, take back facilities are free of charge.



### Your Guarantee

This product is covered by a 12 month guarantee.

This does not cover normal wear and tear or abuse.

For guarantee purposes, please retain your original receipt as proof of purchase.

This guarantee does not affect your statutory rights.

For spares, service and further information please contact;

Customer Services, Ewbank Products Ltd, Billington Road, Burnley, Lancashire, BB11 5ED

Please phone our helpline Tel: 01282 835841 between 08.30 - 17.00 Monday to Thursday and Friday 08.30 - 16.30.

**[www.ewbank.co.uk](http://www.ewbank.co.uk)**

Made in China

EB0376 25/10/11